



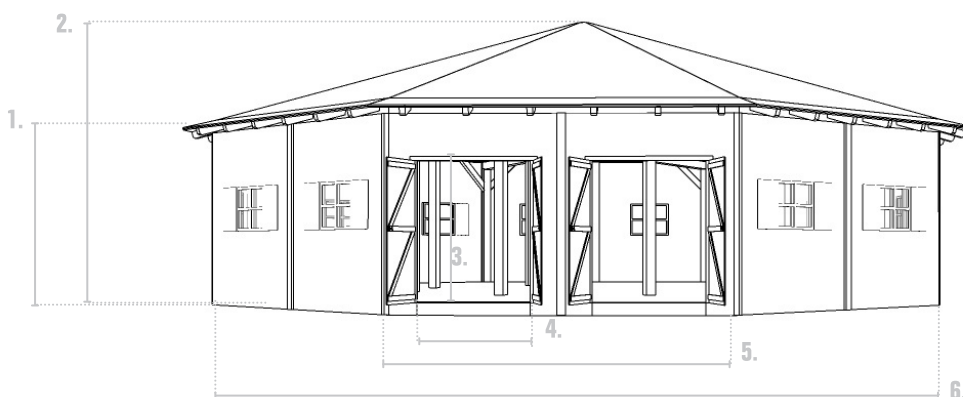
OCTAGON STANDARD

Ideal as a party venue, winter bar, pop-up
bar
from 117 m²

SPECIFICATIONS:

- Frame / skeleton according to old craftsmanship
- Fully mobile
- Robust wooden floor
- Wall panels and doors in authentic wood as standard
- Walls, doors, windows, shutters, gates, screens, ... compatible on all sides
- Wooden interior roof panels
- Exterior roofing in matt anthracite fire-retardant PVC fabric
- Optional snowbreaker available for coupled cabins
- All Octagons are infinitely linkable with each other or with one or more extensions
- Conforms to stringent wind, snow and stability standards, EN 13782 - EN 1990 - EN 1991

DIMENSIONS:



- | | |
|-------------------|---------------------------|
| 1. Side height: | 2.76 m |
| 2. Centre height: | 4.95 m |
| 3. Door height: | 2 m |
| 4. Door width: | 1.60 m |
| 5. Side width: | 5 m |
| 6. Diameter: | 12.9 m
(up to 17.59 m) |



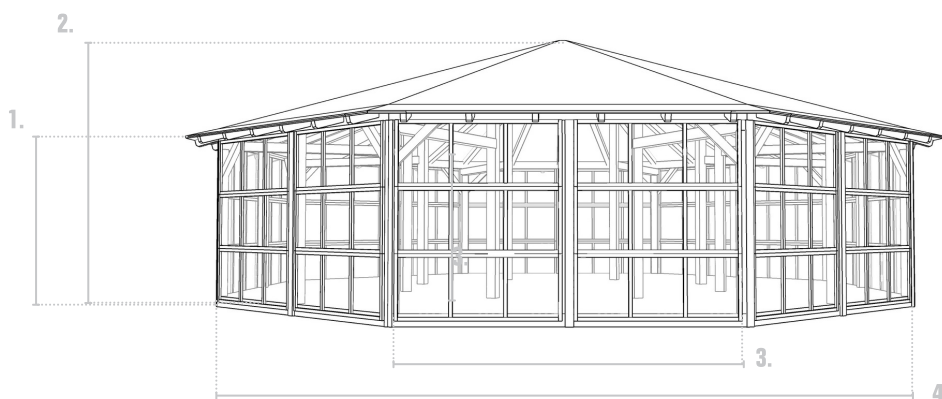
OCTAGON 360° GLASS

Ideal as a party venue, winter bar,
pop-up bar
from 117 m²

SPECIFICATIONS:

- Frame / skeleton according to old craftsmanship
- Fully mobile
- Robust wooden floor
- Fully lockable with 360° glass walls
- Wooden interior roof panels
- Exterior roof covering in matt anthracite fire-retardant PVC fabric
- All Octagons are infinitely linkable with each other or with one or more extensions
- Conforms to stringent wind, snow and stability standards, EN 13782 - EN 1990 - EN 1991

DIMENSIONS:



- 1. Side height: 2.76 m
- 2. Centre height: 4.95 m
- 3. Side width: 5 m
- 4. Diameter: 12.9 m
(up to 17.59 m)



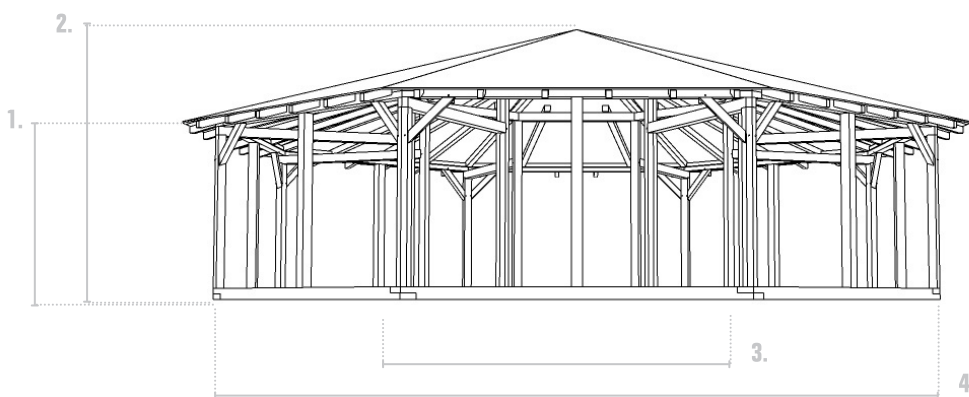
OCTAGON OPEN AIR

Ideal as a party venue, summer bar,
pop-up bar
from 117 m²

SPECIFICATIONS:

- Completely open
- Frame / skeleton according to old craftsmanship
- Fully mobile
- Robust wooden floor
- Wooden interior roof panels
- Exterior roofing in matt anthracite fire-retardant PVC fabric
- Options: central bar, side bar, decorative fences, counter, ...
- Optional snowbreaker available for coupled cabins
- All Octagons are infinitely linkable
- Conforms to stringent wind, snow and stability standards, EN 13782 - EN 1990 - EN 1991

DIMENSIONS:



- 1. Side height: 2.76 m
- 2. Centre height: 4.95 m
- 3. Side width: 5 m
- 4. Diameter: 12.9 m
(up to 17.59 m)



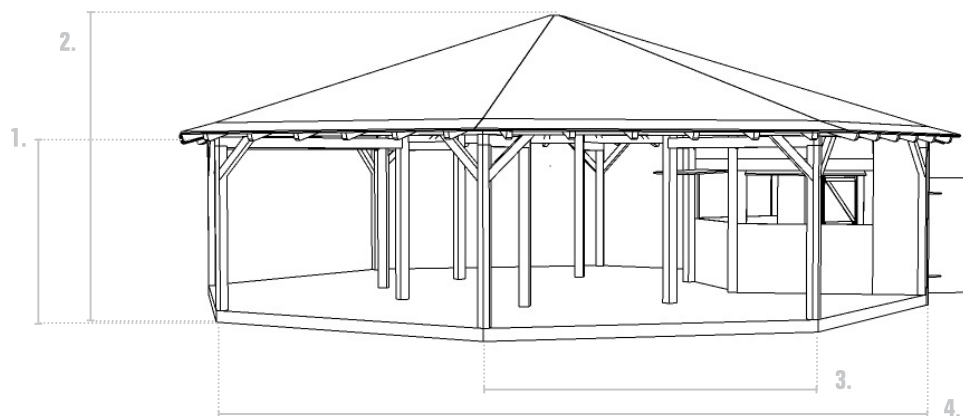
OCTAGON SIDE BAR

Ideal as a party venue, summer bar,
pop-up bar
from 117 m²

SPECIFICATIONS:

- Side bar with 3 lockable shutters = 11m²
- Covered terrace of 106m²
- Frame according to old craftsmanship
- Fully mobile
- Robust wooden floor
- Walls, doors, windows, shutters, gates, screens, ... compatible on all sides
- Wooden interior roof panels
- Exterior roofing in matt anthracite fire-retardant PVC fabric
- All Octagons are infinitely linkable with each other or with one or more extensions
- Conforms to severe wind, snow and stability standards, EN 13782 - EN 1990 - EN 1991

DIMENSIONS:



- 1. Side height: 2.76 m
- 2. Centre height: 4.95 m
- 3. Side width: 5 m
- 4. Diameter: 12.9 m
(up to 17.59 m)



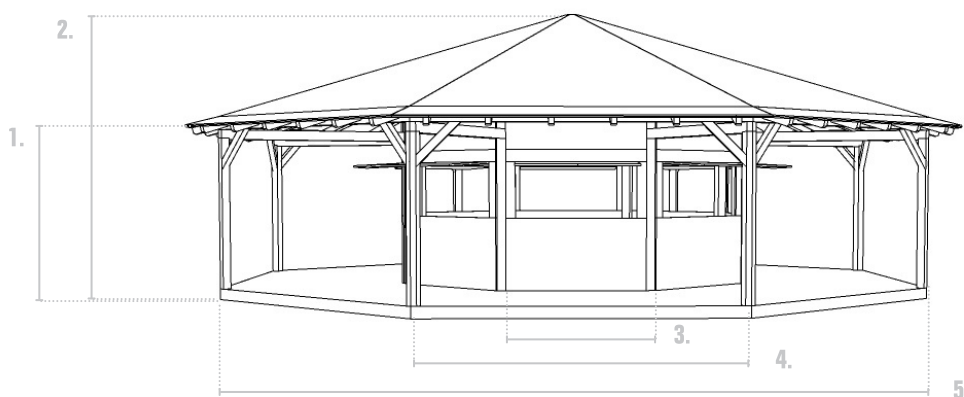
OCTAGON MIDDLE BAR

Ideal as a party venue, summer bar,
pop-up bar
from 117 m²

SPECIFICATIONS:

- Middle bar available with or without lockable shutters = 26m²
- Bar finishing possible in different options (Altholz, rusty corrugated iron, ...)
- 360° covered terrace of 91m²
- Frame according to old craftsmanship
- Fully mobile
- Robust wooden floor
- Walls, doors, windows, shutters, gates, screens, ... compatible on all sides
- Wooden interior roof panels
- Exterior roofing in matt anthracite fire-retardant PVC fabric
- All Octagons are infinitely linkable with each other or with one or more extensions
- Conforms to severe wind, snow and stability standards, EN 13782 - EN 1990 - EN 1991

DIMENSIONS:



1. Side height: 2.76 m
2. Height centre: 4.95 m
3. Side bar width: 2.40 m
4. Side width: 5 m
5. Diameter: 12.9 m
(up to 17.59 m)



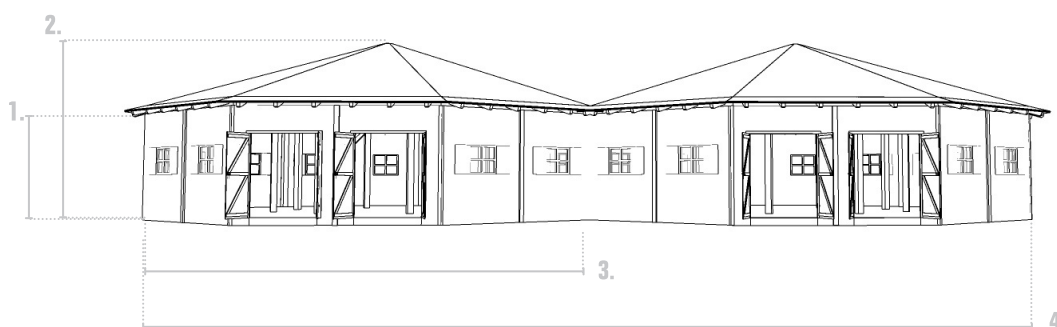
OCTAGON DOUBLE

Ideal as a party venue, summer bar,
pop-up bar
from 234 m²

SPECIFICATIONS:

- Frame / skeleton according to old craftsmanship
- Fully mobile
- Robust wooden floor
- Walls, doors, windows, shutters, gates, screens, etc. compatible on all sides
- Wall panels and doors standard in antique wood
- Wooden interior roof panels
- Exterior roofing in matt anthracite fire-retardant PVC fabric
- Optional snowbreaker available for coupled cabins
- Conforms to stringent wind, snow and stability standards, EN 13782 - EN 1990 - EN 1991

DIMENSIONS:



- | | |
|-------------------|--------|
| 1. Side height: | 2.76 m |
| 2. Height centre: | 4.95 m |
| 3. Width: | 12.9 m |
| 4. Width: | 25.8 m |